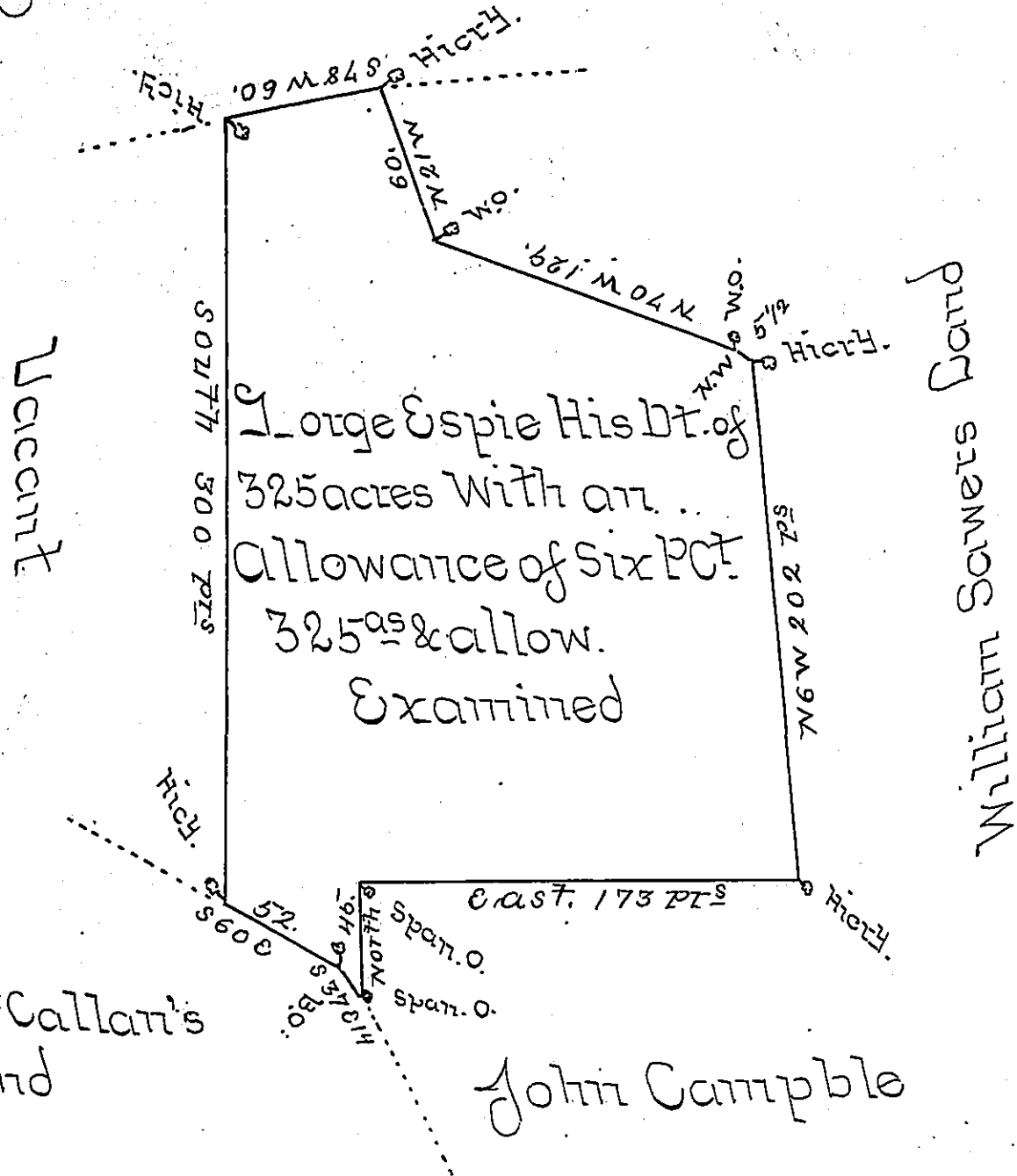


John Ouer's Land



A Draught of George Espies Land situate in Berry Township and County of Lancaster Containing 325 acres With an allowance of six Pct for Roads and Highways By Virtue of the Honble The Proprietors Warrant the 17<sup>th</sup> Day of May - 1750 and Surveyed the 28<sup>th</sup> Day of Novm<sup>br</sup> 1754

To Nicholas Scull Esq<sup>r</sup> }  
 Surveyor Generall }

Wm Galbreath D.S.

Sir y<sup>e</sup> above Draught was found among William Galbraith's Papers Ret<sup>d</sup> to me

B:G.

IN TESTIMONY that the above is a copy of the original remaining on file in the Department of Internal Affairs of Pennsylvania, made conformably to an Act of Assembly approved the 16th day of February, 1833, I have hereunto set my Hand and caused the Seal of said Department to be affixed at Harrisburg, this third day of April 1900.

*James W. Latta*  
 Secretary of Internal Affairs.